

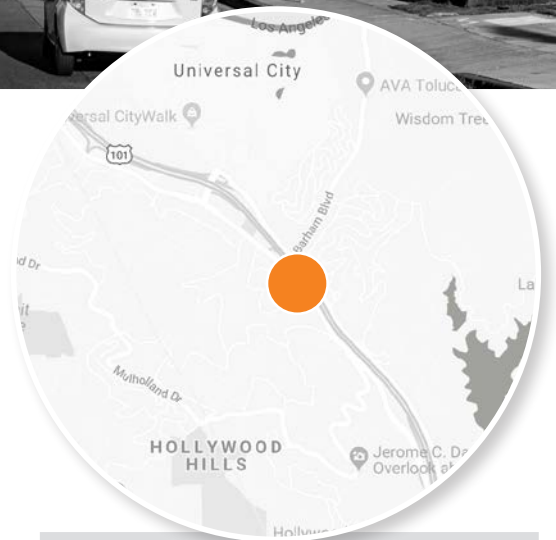
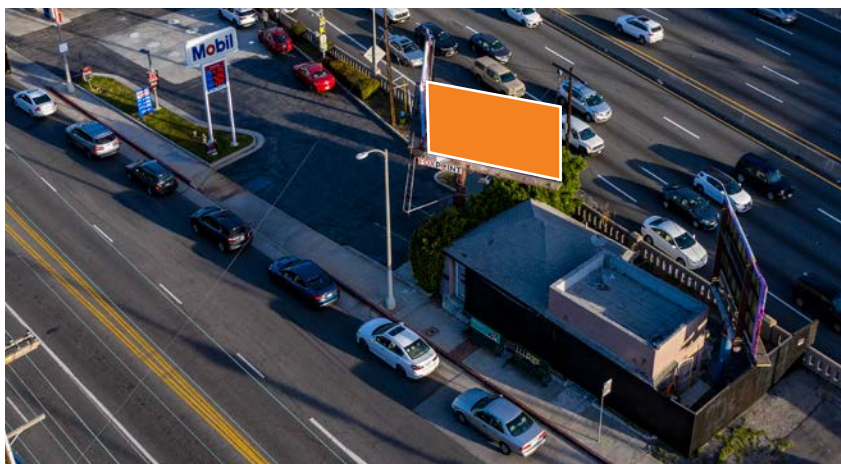
**BARHAM & CAHUENGA**

**LOS ANGELES**



**HEART OF HOLLYWOOD**

Positioned near the entry to Universal City, this display is located at the intersection of Cahuenga, Barham and the 101 (Hollywood Freeway). This strategically positioned large format display offers visibility from several vantage points. The display is situated in a premium Hollywood location that provides an iconic position for any advertisers message. Its proximity to Universal Studios, Hollywood and the Sunset Strip in West Hollywood, world-class shopping, and many other "must-see" landmarks like the famous Hollywood Sign. This sign is in the ideal position to key vehicular traffic for your message.



<b>PANEL NO:</b>	CA-381
<b>MARKET:</b>	Los Angeles
<b>COMMUNITY:</b>	Hollywood
<b>SIZE:</b>	10'6"H x 22'8"W
<b>LAT/LONG:</b>	34.12885, -118.3475
<b>FACING:</b>	East
<b>*IMPRESSIONS:</b>	82,842
<b>TAB ID:</b>	30920177
<b>TYPE:</b>	Static
<b>ILLUMINATION:</b>	24hrs

*\*Impressions values are weekly based on Adults 18+.*