

30-15 THOMSON AVE LONG ISLAND CITY, QUEENS

NEW YORK



KING OF THE HILL IN QUEENS

14'x48' bulletin in Queens, New York with long approach views catching commuters going to and from Manhattan. This high profile, two-sided bulletin reads to traffic on Thomson Avenue with secondary reads on Skillman Avenue. Queens is on Long Island across the East River from Manhattan. Queens is host of the annual U.S. Open tennis tournament and nearby Citi Field where the MLB NY Mets play.



RATE: \$10,500 / 4 WKS NET



PANEL NO: NY-03

MARKET: New York

COMMUNITY: Queens

SIZE: 14'H x 48'W

LAT/LONG: 40.745370, -73.938230

FACING: West

*IMPRESSIONS: 311,000

TAB ID: Pending

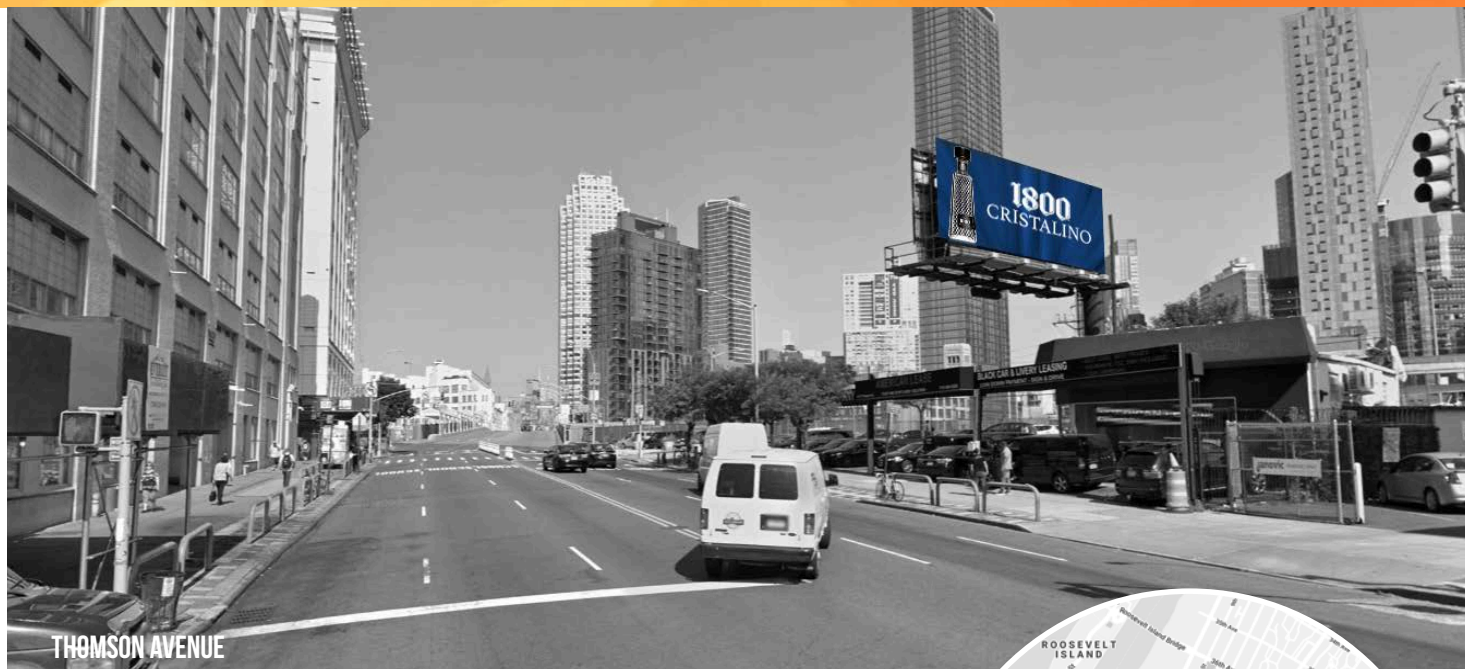
TYPE: Static

ILLUMINATION: 18hrs

**Impressions values are weekly based on Adults 18+.*

30-15 THOMSON AVE LONG ISLAND CITY, QUEENS

NEW YORK



THOMSON AVENUE

KING OF THE HILL IN QUEENS

14'x48' bulletin in Queens, New York with long approach views catching commuters going to and from Manhattan. This high profile, two-sided bulletin reads to traffic on Thomson Avenue with secondary reads on Skillman Avenue. Queens is on Long Island across the East River from Manhattan. Queens is host of the annual U.S. Open tennis tournament and nearby Citi Field where the MLB NY Mets play.



SKILLMAN AVENUE

PANEL NO: NY-04

MARKET: New York

COMMUNITY: Queens

SIZE: 14'H x 48'W

LAT/LONG: 40.745370, -73.938230

FACING: East

*IMPRESSIONS: Pending

TAB ID: Pending

TYPE: Static

ILLUMINATION: 18hrs

**Impressions values are weekly based on Adults 18+.*