

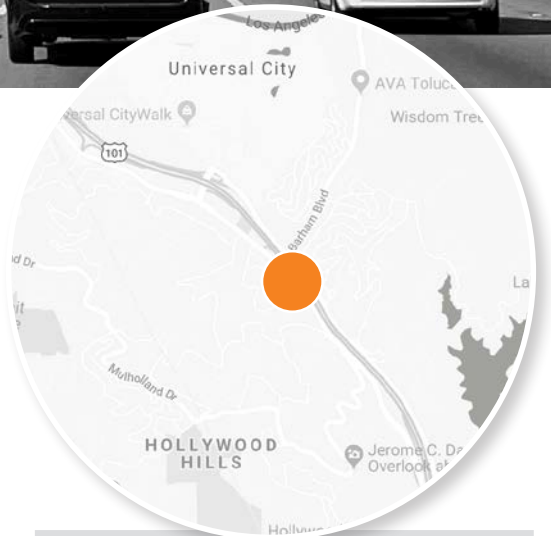
BARHAM & CAHUENGA

LOS ANGELES



HEART OF HOLLYWOOD

Positioned near the entry to Universal City, this display is located at the intersection of Cahuenga, Barham and the 101 (Hollywood Freeway). This strategically positioned large format display offers visibility from several vantage points. The display is situated in a premium Hollywood location that provides an iconic position for any advertisers message. Its proximity to Universal Studios, Hollywood and the Sunset Strip in West Hollywood, world-class shopping, and many other "must-see" landmarks like the famous Hollywood Sign. This sign is in the ideal position to key vehicular traffic for your message.



PANEL NO:	CA-380
MARKET:	Los Angeles
COMMUNITY:	Hollywood
SIZE:	10'6"H x 22'8"W
LAT/LONG:	34.12878, -118.3475
FACING:	East
*IMPRESSIONS:	950,988
TAB ID:	30920176
TYPE:	Static
ILLUMINATION:	24hrs

**Impressions values are weekly based on Adults 18+.*

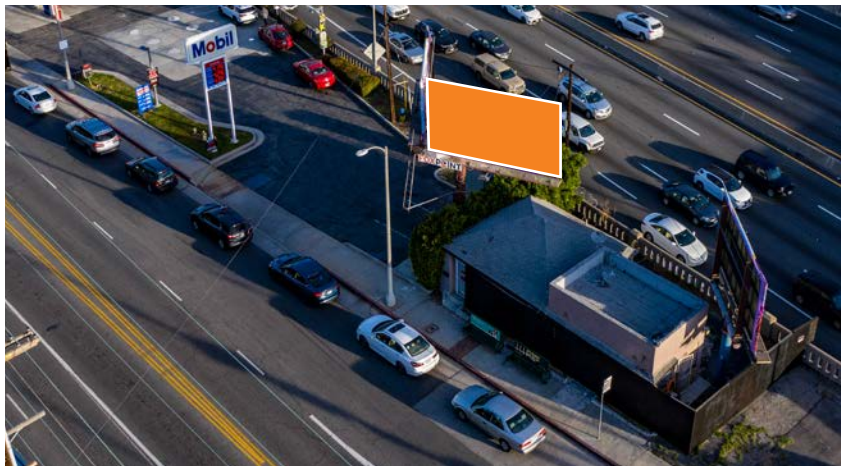
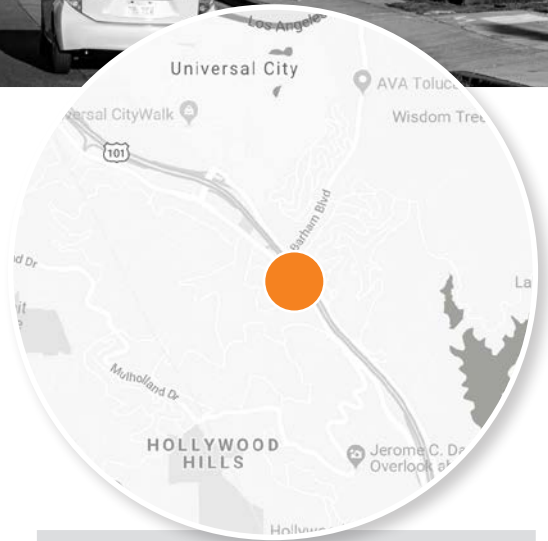
BARHAM & CAHUENGA

LOS ANGELES



HEART OF HOLLYWOOD

Positioned near the entry to Universal City, this display is located at the intersection of Cahuenga, Barham and the 101 (Hollywood Freeway). This strategically positioned large format display offers visibility from several vantage points. The display is situated in a premium Hollywood location that provides an iconic position for any advertisers message. Its proximity to Universal Studios, Hollywood and the Sunset Strip in West Hollywood, world-class shopping, and many other "must-see" landmarks like the famous Hollywood Sign. This sign is in the ideal position to key vehicular traffic for your message.



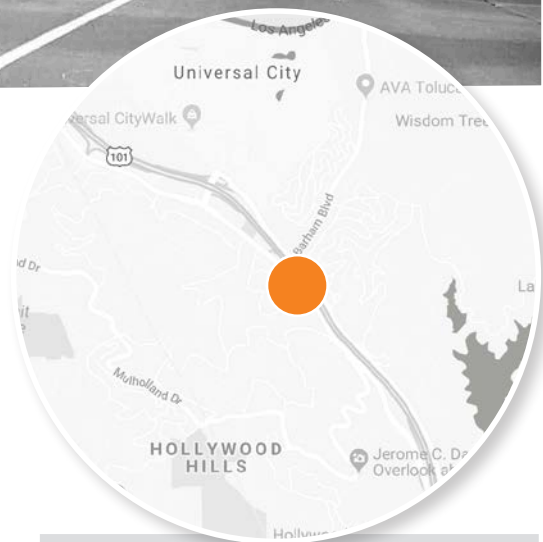
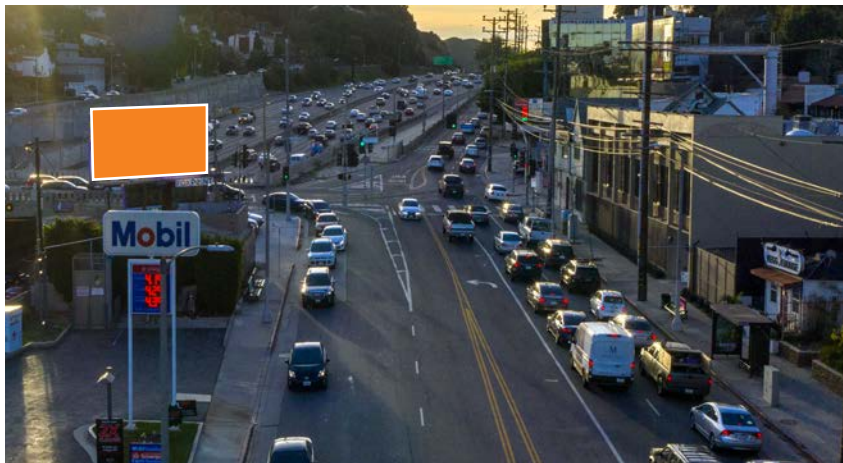
PANEL NO:	CA-381
MARKET:	Los Angeles
COMMUNITY:	Hollywood
SIZE:	10'6"H x 22'8"W
LAT/LONG:	34.12885, -118.3475
FACING:	East
*IMPRESSIONS:	82,842
TAB ID:	30920177
TYPE:	Static
ILLUMINATION:	24hrs

**Impressions values are weekly based on Adults 18+.*



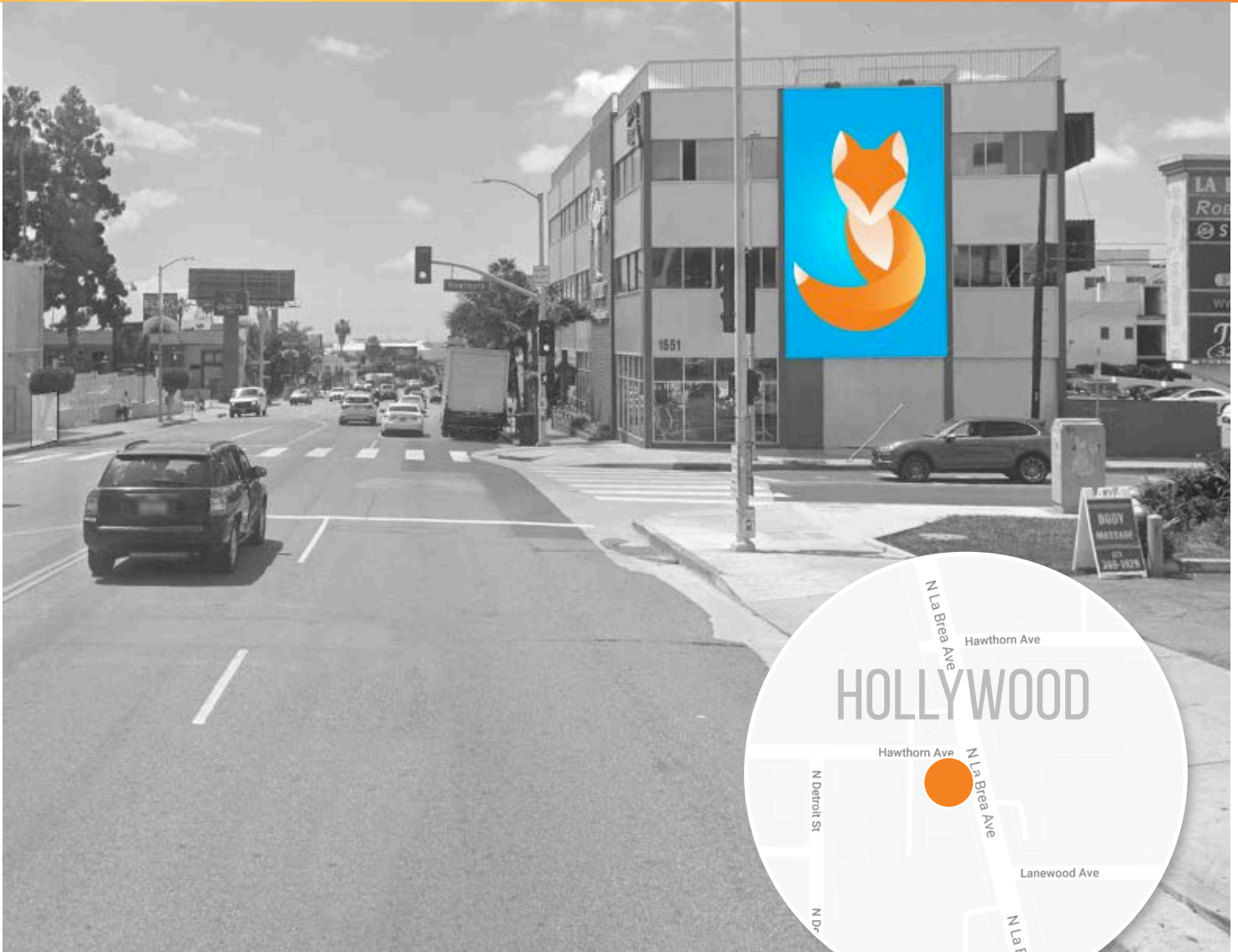
HEART OF HOLLYWOOD

Positioned near the entry to Universal City, this display is located at the intersection of Cahuenga, Barham and the 101 (Hollywood Freeway). This strategically positioned large format display offers visibility from several vantage points. The display is situated in a premium Hollywood location that provides an iconic position for any advertisers message. Its proximity to Universal Studios, Hollywood and the Sunset Strip in West Hollywood, world-class shopping, and many other "must-see" landmarks like the famous Hollywood Sign. This sign is in the ideal position to key vehicular traffic for your message.



PANEL NO:	CA-382
MARKET:	Los Angeles
COMMUNITY:	Hollywood
SIZE:	10'6"H x 22'8"W
LAT/LONG:	34.12878, -118.3475
FACING:	West
*IMPRESSIONS:	99,569
TAB ID:	30920178
TYPE:	Static
ILLUMINATION:	24hrs

**Impressions values are weekly based on Adults 18+.*



HIGH PROFILE WALLSCAPE IN HOLLYWOOD

This prominent location is situated between Hollywood and West Hollywood just south of the 101. Placed on the iconic 'Hollywood Gym' wall showing to busy Le Brea Avenue, commuters are exposed to this display on their way south toward Sunset Blvd, Santa Monica Blvd and Melrose Ave.

PANEL NO:	CA-102
MARKET:	Los Angeles
COMMUNITY:	Hollywood
SIZE:	6'H x 28'W
LAT/LONG:	34.09923, -118.344381
FACING:	North
*IMPRESSIONS:	250,181
TAB ID:	30970479
TYPE:	Static Wallscape
ILLUMINATION:	18hrs

**Impressions values are weekly based on Adults 18+.*



HIGH PROFILE WALLSCAPE IN HOLLYWOOD

This prominent location is situated between Hollywood and West Hollywood just south of the 101. Placed on the iconic 'Hollywood Gym' wall showing to busy Le Brea Avenue, commuters are exposed to this display on their way north toward Hollywood Blvd.

PANEL NO:	CA-103
MARKET:	Los Angeles
COMMUNITY:	Hollywood
SIZE:	28'H x 47'W
LAT/LONG:	34.09923, -118.344381
FACING:	South
*IMPRESSIONS:	250,181
TAB ID:	30970480
TYPE:	Static Wallscape
ILLUMINATION:	18hrs

**Impressions values are weekly based on Adults 18+.*



HIGH PROFILE BULLETIN ON VAN NUYS BLVD & VENTURA BLVD

Desirable Sherman Oaks location along the Van Nuys Blvd thoroughfare, a feeder to the 101/Ventura Freeway. This classic Los Angeles bulletin provides long reads as vehicles approach multiple stop lights on their commute home or to many popular shopping & dining destinations.

PANEL NO:	CA-101
MARKET:	Los Angeles
COMMUNITY:	Sherman Oaks
SIZE:	14'H x 48'W
LAT/LONG:	34.15068195, -118.4486611
FACING:	North
*IMPRESSIONS:	198,368
GEOPATH ID:	31022097
TYPE:	Static Bulletin
ILLUMINATION:	18hrs

**Impressions values are weekly based on Adults 18+.*