

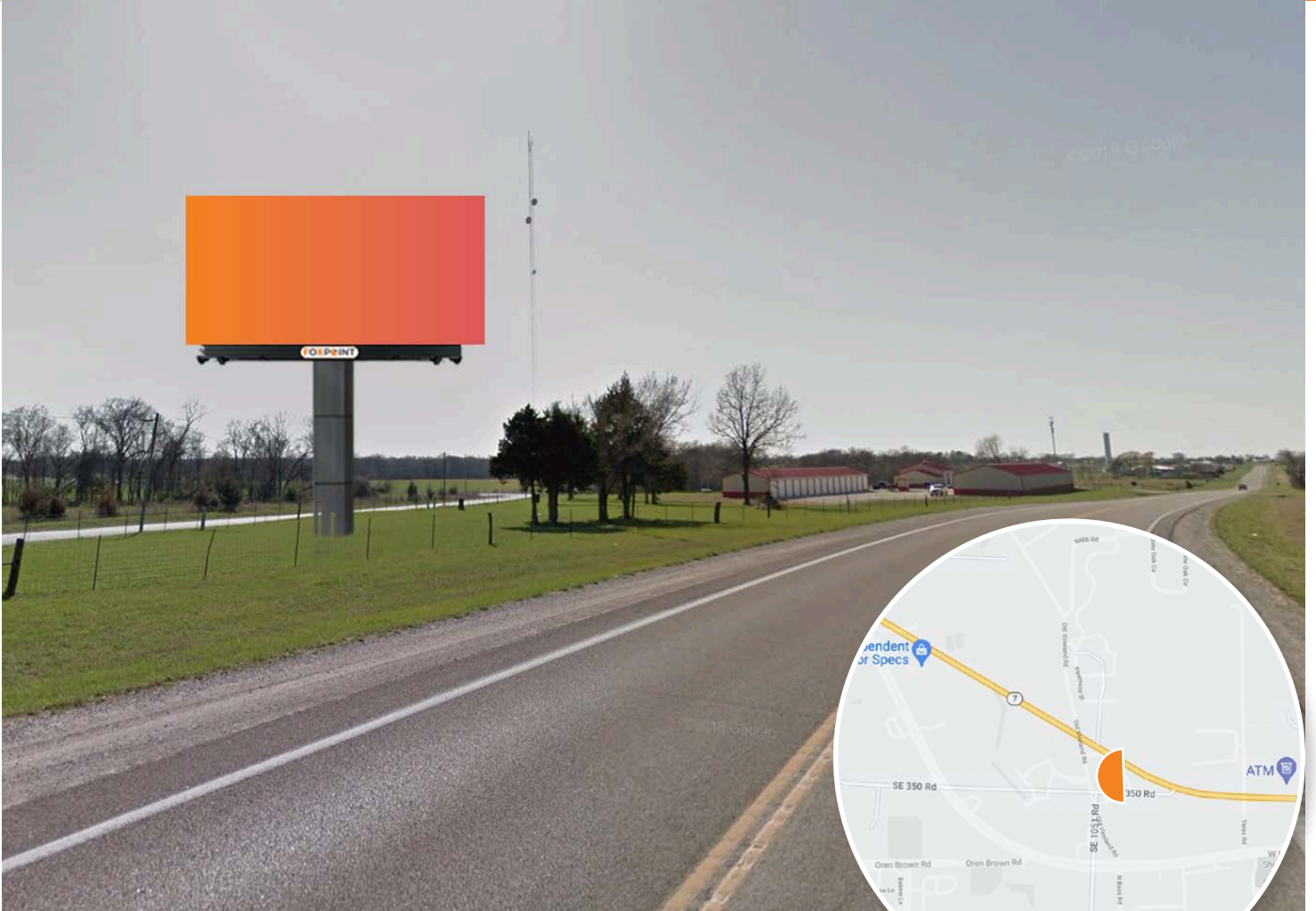


## LAKE OF THE OZARKS MAIN THOROUGHFARE

This 12' x 24' bulletin is located in a heavily traveled tourist area in the heart of the Lake of the Ozarks, Missouri. Delivering a clean, unobstructed read to motorists this Foxpoint Media bulletin will provide an advertiser excellent messaging to both the local community and the tourist audience. Highway 7 is the main roadway for travelers heading between Kansas City and the Lake.

<b>PANEL NO:</b>	MO-04A
<b>MARKET:</b>	Kansas City
<b>COMMUNITY:</b>	Clinton
<b>SIZE:</b>	12'H x 24'W
<b>LAT/LONG:</b>	38.31040, -93.56353
<b>FACING:</b>	West
<b>*IMPRESSIONS:</b>	TBD
<b>GEOPATH ID:</b>	50406235
<b>TYPE:</b>	Static
<b>ILLUMINATION:</b>	18hrs

*\*Impressions values are weekly based on Adults 18+.*



## LAKE OF THE OZARKS MAIN THOROUGHFARE

This 12' x 24' bulletin is located in a heavily traveled tourist area in the heart of the Lake of the Ozarks, Missouri. Delivering a clean, unobstructed read to motorists this Foxpoint Media bulletin will provide an advertiser excellent messaging to both the local community and the tourist audience. Highway 7 is the main roadway for travelers heading between Kansas City and the Lake.

<b>PANEL NO:</b>	MO-04B
<b>MARKET:</b>	Kansas City
<b>COMMUNITY:</b>	Clinton
<b>SIZE:</b>	12'H x 24'W
<b>LAT/LONG:</b>	38.31040, -93.56353
<b>FACING:</b>	East
<b>*IMPRESSIONS:</b>	TBD
<b>GEOPATH ID:</b>	50406236
<b>TYPE:</b>	Static
<b>ILLUMINATION:</b>	18hrs

*\*Impressions values are weekly based on Adults 18+.*