

30-15 THOMSON AVE LONG ISLAND CITY, QUEENS

NEW YORK



KING OF THE HILL IN QUEENS

14'x48' bulletin in Queens, New York with long approach views catching commuters going to and from Manhattan. This high profile, two-sided bulletin reads to traffic on Thomson Avenue with secondary reads on Skillman Avenue. Queens is on Long Island across the East River from Manhattan. Queens is host of the annual U.S. Open tennis tournament and nearby Citi Field where the MLB NY Mets play.

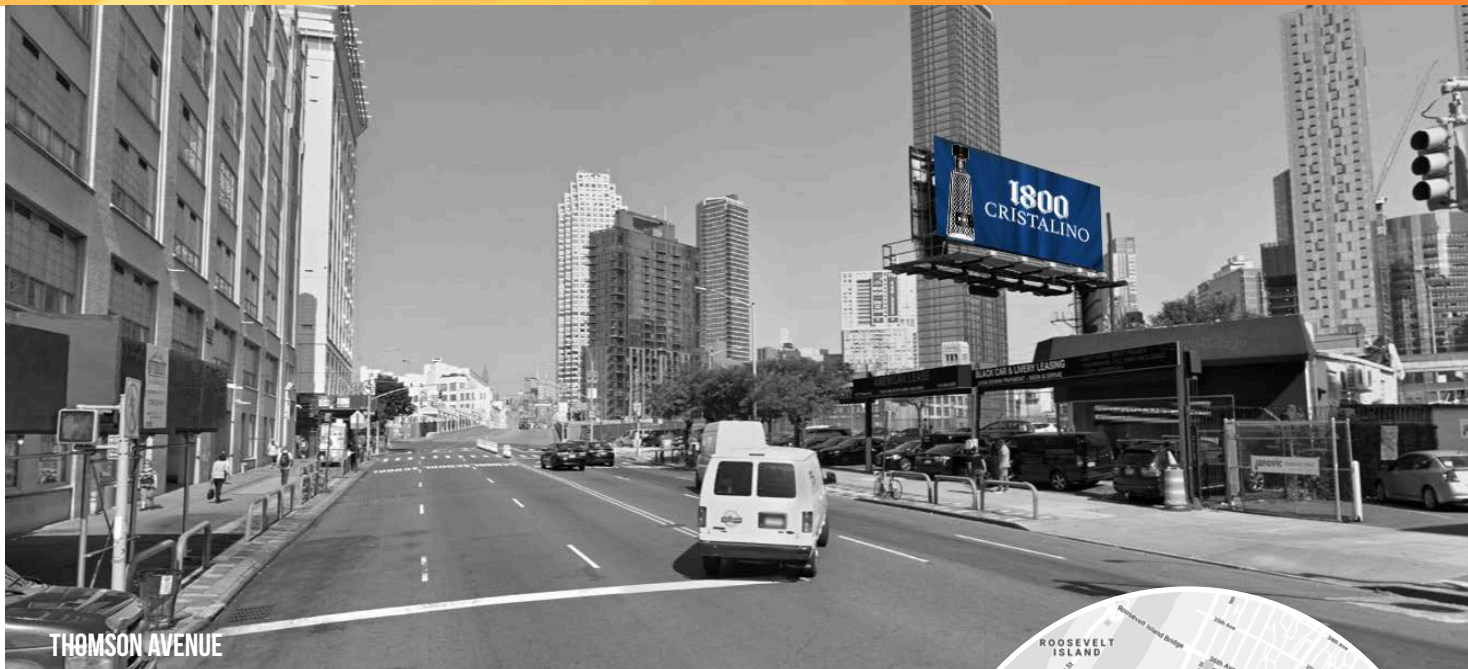


PANEL NO:	NY-03a
MARKET:	New York
COMMUNITY:	Queens
SIZE:	14'H x 48'W
LAT/LONG:	40.745370, -73.938230
FACING:	West
*IMPRESSIONS:	311,000
TAB ID:	Pending
TYPE:	Static
ILLUMINATION:	18hrs

**Impressions values are weekly based on Adults 18+.*

30-15 THOMSON AVE LONG ISLAND CITY, QUEENS

NEW YORK



THOMSON AVENUE

KING OF THE HILL IN QUEENS

14'x48' bulletin in Queens, New York with long approach views catching commuters going to and from Manhattan. This high profile, two-sided bulletin reads to traffic on Thomson Avenue with secondary reads on Skillman Avenue. Queens is on Long Island across the East River from Manhattan. Queens is host of the annual U.S. Open tennis tournament and nearby Citi Field where the MLB NY Mets play.



SKILLMAN AVENUE

PANEL NO:	NY-03b
MARKET:	New York
COMMUNITY:	Queens
SIZE:	14'H x 48'W
LAT/LONG:	40.745370, -73.938230
FACING:	East
*IMPRESSIONS:	Pending
TAB ID:	Pending
TYPE:	Static
ILLUMINATION:	18hrs

**Impressions values are weekly based on Adults 18+.*