

30-35 THOMPSON AVE. LONG ISLAND CITY, NY 11101

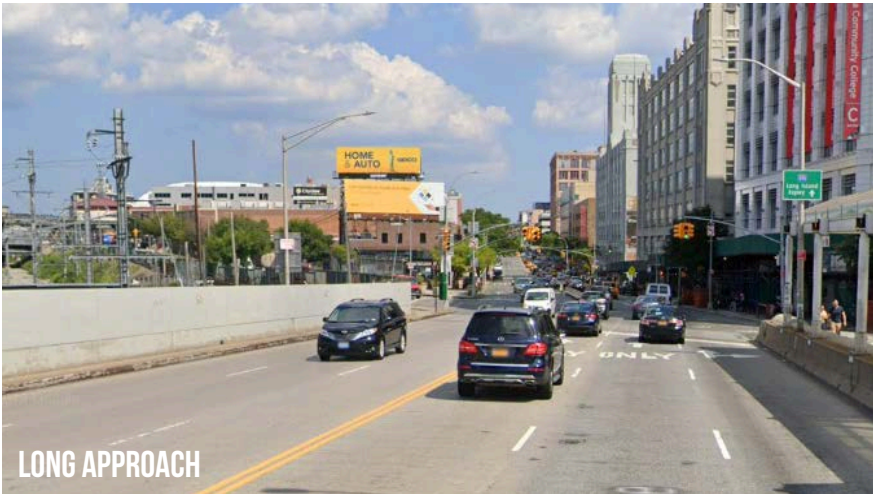
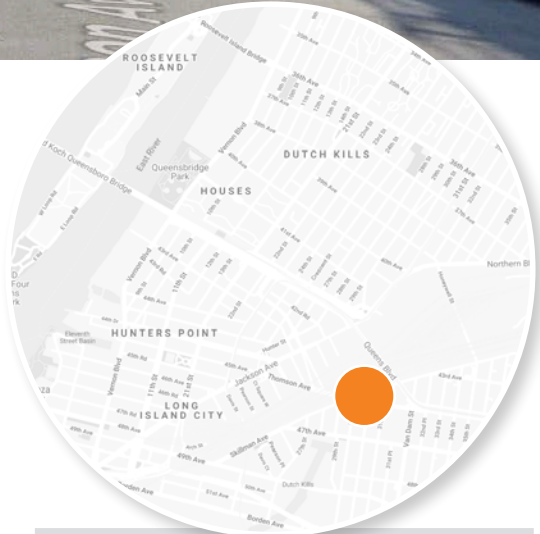
NEW YORK



THOMPSON AVENUE

TALL STRUCTURE WITH LONG APPROACH

14'x48' bulletin in Queens with long approach views. This high-profile bulletin targets traffic exiting Manhattan over the Queensboro/59th Street Bridge. One of the most heavily-trafficked bridges in all of New York, the toll-free Queensboro Bridge is a popular alternate to the Midtown Tunnel, connecting Midtown East Manhattan and the Long Island Expy and Queens Boulevard in Queens. Foxpoint also operates the sign directly in front of this display making this environment a perfect opportunity for a domination campaign.



LONG APPROACH

PANEL NO:	NY-05A
MARKET:	New York
COMMUNITY:	Queens
SIZE:	14'H x 48"W
LAT/LONG:	40.745355, -73.936269
FACING:	West
*IMPRESSIONS:	222,028
GEOPATH ID:	514969
TYPE:	Static
ILLUMINATION:	Yes

**Impressions values are weekly based on Adults 18+.*